

# Percy Hedley School's

## Family Information and FOPHS News Friday 26<sup>th</sup> June

What a week this has been? It has been a challenge with the heat. Who would have thought we would complain about it? However, it's lovely to see students getting out and about.

I sent a text this week reminding parents to send in sunscreen and hats and also to staff asking them to top up water bottles for student s getting taxis home.

### What's coming up?

Wednesday 1<sup>st</sup> July: Summer MOVE and Sports (Space theme)

Thursday 2<sup>nd</sup> July: Summer MOVE and Sports (Space theme)

Friday 3<sup>rd</sup> July 18-20.00: KS4 and above.

Wednesday 8<sup>th</sup> July 9.45-10.45: FoPHS Meeting

Thursday 9<sup>th</sup> July 9.30-11.30: Drop in with Family Liaison

Friday 10<sup>th</sup> July: This is Me Festival

### Join the FoPHS 100 Club!



### School Calendars

Term dates 2025-26

Term dates 2026-27

Events calendar  
2025-26



### Free School Meals:

As previously communicated both here and in the media the eligibility for these will change in September. Letters have been sent home to all families. Eligibility will be checked via your National Insurance number, but I do need the form completed. Further details will be shared as and when we receive them.

If you have not received the letter, please let me know.

[Here is an online copy for information:](#)



### A Message from Our Wellbeing Team

A message from the Wellbeing Team: We are writing our mental health strategy for the coming 2 years and would love to get input from parents / carers to help us shape what this looks like. If you would be interested in being part of discussions to contribute to the writing of this, or had any comments or ideas you would like considered please get in touch with Carolyn Ellis, Senior Mental Health Lead

[c.ellis@percyhedley.org.uk](mailto:c.ellis@percyhedley.org.uk)





## Accessibility!

This is wide ranging, encompassing physical, emotional and “hidden disability” related needs. How often has someone with a valid blue badge been challenged because they don’t “look disabled”? Let’s not get into that; as parent to a young man with a learning disability I pick and choose where and when I need to use his blue badge for safety reasons.

I’ve included links which may be useful below. There is almost always a link on visitor attractions to support those with access requirements. Just put “accessibility” into the search bar on the venue. Often there are discounts such as a free carer ticket, potential to use access cards or Max cards for discounts and rapid access pass (to skip the queue in theme parks) You will need to check what evidence is required and what their terms and conditions are.

### **Beach Access North East (BANE)**

If you have a wheelchair user or person who has severe mobility problems who would like to access the beach, this is the group for you. Many of you already know, but as they have new locations, I thought it worth sharing again.

“It is Beach Access North East’s ambition to supply wheelchair access to every beach in North East England”.

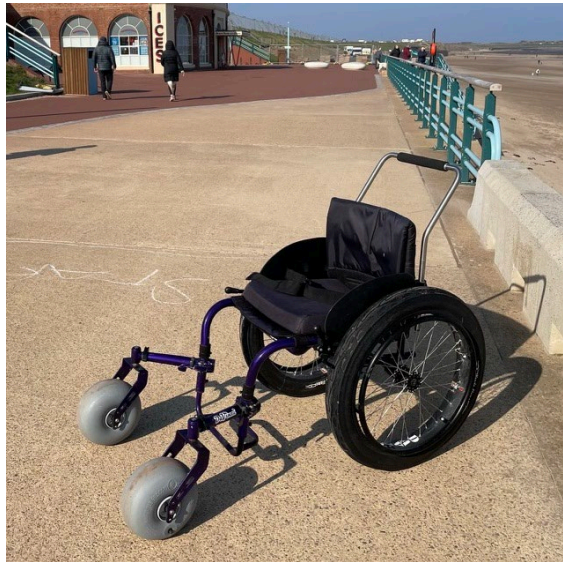
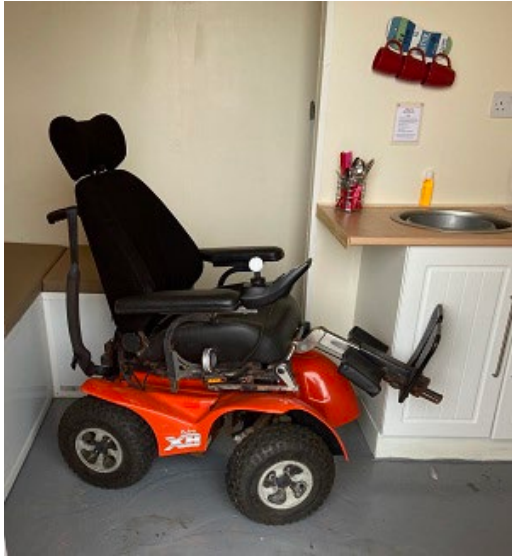
[Here is the link to their website:](#)

[Here is the link to locations:](#)

Here are photos of the type of equipment on offer. Please check individual locations to check what they stock.

[Here is the link to frequently asked questions which may be helpful:](#)





## Changing Places App

A parent alerted me to the app. Available on Apple iOS or Android phones; these can be downloaded from the app store. Reviews on the Android are positive, those on Apple are old reviews, so am sure they will be better now. This enables you to check on the move.

- Download for Apple iOS on the [App Store](#).
- Download for Android devices on the [Google Play Store](#).

“Changing Places Toilets enable anyone, regardless of their disability, to go to the shops, attend hospital appointments, enjoy community life, socialise and travel. All the things that most of us take for granted every day. Changing Places toilets should be provided in addition to standard accessible toilets.

**A Changing Places Toilet is a large, accessible restroom equipped with additional space and specialised equipment designed to cater to the requirements of individuals with severe disabilities. In contrast to a typical accessible toilet, Changing Places facilities are equipped with amenities such as privacy curtains, lifting hoists, and adult-sized changing benches”.**

As I research places and activities suitable for our school community I have noted an increase in these facilities over the last few years. This is probably as a result of government policy in 2021 that any new public building must have a changing place. This includes:

Shopping Centres

Sports Stadiums

Arts and Music Venues

Museums

Supermarkets

Cinemas

Motorway Service Stations





### **Seven Stories:**

Keep the kids entertained this weekend with a Flower Sun Catcher session right here at Seven Stories. [Find out more here](#)

Listen to a story inspired by nature, then create a beautiful bright flower sun catcher to brighten up your day.

Suitable for the whole family – come along and create something special together!

Spaces are limited – book your spot today!

Children £6.50

Additional adults £6.50

One FREE adult per booking (free ticket must be booked)

[Find out what's on here](#)

### **Decorate a Dragon Craft**

Enjoy your dragon-tastic story, then design and decorate your own dragon to take home.

Suitable for the whole family – come along and create something special together!

Spaces are limited – book your spot today!

Children £6.50

Additional adults £6.50

One FREE adult per booking (free ticket must be booked)



### Smile through Sport

🌞👉 SEND Summer Holiday Activity Programme 🎉🌞

We're delighted to launch our Summer Holiday Activity Programme for children and young people with SEND across the North East!

Sessions are designed to be fun, relaxed and engaging, with activities adapted to suit individual needs and abilities. Whether your child enjoys sports, sensory play or trying something new, there's something for everyone! Siblings are welcome too. 😊

Activity info:

🎯 Outdoor Games – fun throwing, catching and striking activities

🏊 Multi-Sports – a variety of exciting sports, games and challenges

🏃 Athletics & Frame Running – running, jumping and throwing activities, with frame runners available for those who require additional mobility support

😊 Fun Sessions – sensory room, soft play and outdoor playground activities

🏀 Wheelchair Basketball & Tennis – experience sports using specialist sports wheelchairs

👉 [Book your place today. Find out what's on here](#)

Please feel free to get in touch if you'd like to discuss your child's needs before booking.



## SEND Junior Summer Holiday Programme 2026

20th July - 30<sup>th</sup> August

<b>Monday</b>	
<b>Outdoor Games - Gibside National Trust</b> 10.30am - 12nn 6 years and over Gibside National Trust, Gateshead, NE16 6BG FREE	<b>Multi Sport - Cramlington</b> 2pm - 3.30pm 8 years and over Cramlington Community Centre, Cramlington, NE23 1DT £5pp
<b>Tuesday</b>	
<b>Multi Sport - Sunderland</b> 10am - 12nn 8 years and over Nissan Leisure Centre, Sunderland, SR5 3HZ £5pp Excludes 21st July	<b>Multi Sport - Hexham</b> 2pm - 4pm 8 years and over Wentworth Leisure Centre, Hexham, NE46 3PD £5pp Excludes 18 <sup>th</sup> August
<b>Wednesday</b>	
<b>Outdoor Games - Crook Hall / Souter Lighthouse National Trust</b> 11am - 12.30pm 6 years and over Crook Hall Gardens, Durham, DH1 5SZ Souter Lighthouse, Sunderland, SR6 7NH FREE Crook Hall 22 <sup>nd</sup> July & 12 <sup>th</sup> Aug only Souter 29 <sup>th</sup> July, 5 <sup>th</sup> , 19 <sup>th</sup> & 26 <sup>th</sup> Aug only	<b>Athletics &amp; Frame Running - Gateshead</b> 1.30-3.30pm 8 years and over Gateshead International Stadium, Gateshead, NE10 0EF £5pp
<b>Thursday</b>	
<b>Fun Session - Gateshead</b> 10am - 12nn 4-10 year olds Cedars Academy, Low Fell, Gateshead NE9 6QD £5pp	<b>Wheelchair Basketball &amp; Tennis - Gateshead</b> 1pm - 3pm 8 years and over Birtley Leisure Centre, Birtley, DH3 2TB £5pp
<b>Friday</b>	
<b>Multi Sport - Newcastle</b> 10am - 12nn 8 years and over Walker Activity Dome, Newcastle, NE6 3BR £5pp Excludes 31st July	<b>Book now:</b> <a href="http://www.smilethroughsport.com/whats-on/">www.smilethroughsport.com/whats-on/</a>  <b>For more information:</b> Call us - 07934 227 276 Email us - <a href="mailto:info@smilethroughsport.com">info@smilethroughsport.com</a>

### Tim Lamb Centre: Summer activities

Summer 2026 at the Tim Lamb Centre! 😊

Join us this summer for fun, play, and activities for the whole family!

📄 Admission: £4 per child

🎉 All extra activities are included at no additional cost

📅 Open 7 days a week during the school holidays

🕒 Holiday opening hours: 10:00am – 4:00pm

✔ Drop-in sessions available

✓ Unlimited stay and play

✓ No booking required

Our Nature Session every Wednesday must be booked in advance. 10:30-2:30 small group session in our nature area with our adorable animals. £30 per day.

Unfortunately, we are unable to provide 1to1 support.

For more information, please contact Kayleigh at: [Kayleigh@pathways4all.co.uk](mailto:Kayleigh@pathways4all.co.uk)

The Tim Lamb Centre is operated by Pathways4All (registered charity) and is designed for children with disabilities/additional needs and their siblings. Family membership is available to families with a child who has disabilities or additional needs.

Please note: During school holidays, guest admission is not permitted. A valid membership is required. This costs £20 for the year, with a £4 per child visiting the centre.

[Website:](#)

[Membership form:](#)



**Pathways4All** **SUMMER IS HERE**  
**July**

**Monday 20th Foam Party**  
Party Gems Foam Party  
1pm - 3pm

**Tuesday 21<sup>st</sup> Stay & Play**

**Wednesday 22<sup>nd</sup> Stay & Play**

**Thursday 23<sup>rd</sup> Summer is Here Day**  
Face painter. Scavenger Hunt. Summer themed Competitions.  
1pm - 3pm

**Friday 24<sup>th</sup> Bouncy Castle**  
Rainbow bouncy castle  
10am - 4pm

**Saturday 25<sup>th</sup> Stay & Play**

**Sunday 26<sup>th</sup> Stay & Play**

**No Booking Required**

Tim Lamb's Children's Centre

PAINTED SMILES NE  
Face paint & glitter tattoos

See posters for details:



**Pathways4All** **ANIMAL WEEK**  
**July**

**Monday 27th Animal Meet & Greet**  
Walk the donkeys and meet the alpacas  
11am-12pm & 12.30pm-1.30pm

**Tuesday 28th Stay & Play**

**Wednesday 29th Stay & Play**

**Thursday 30<sup>th</sup> Crazy Creatures**  
Come and hold an array of creatures  
1pm-3pm

**Friday 31<sup>st</sup> Bouncy Castle**  
Join us for a 3D circus Bouncy Castle  
10am-4pm

**Saturday 1<sup>st</sup> Stay & Play**

**Sunday 2<sup>nd</sup> Stay & Play**

**No Booking Required**

Tim Lamb's Children's Centre

TADY BETHANY

Pathways4All  
**SCIENCE WEEK**  
 Tim Lamb's Children's Centre  
 AUGUST

**Monday 3<sup>rd</sup> Bubbleologist**  
 Come and be part of interactive bubble play  
 1pm - 3pm

**Tuesday 4<sup>th</sup> Stay & Play**

**Wednesday 5<sup>th</sup> Stay & Play**

**Thursday 6<sup>th</sup> Science session**  
 Join our staff for a science afternoon  
 1pm - 3pm

**Friday 7<sup>th</sup> Bouncy Castle**  
 10am - 4pm

**Saturday 8<sup>th</sup> Stay & Play**

**Sunday 9<sup>th</sup> Stay & Play**






No Booking Required

Pathways4All  
**UNDER THE SEA WEEK**  
 Tim Lamb's Children's Centre  
 AUGUST

**Monday 10<sup>th</sup>**  
 Captain Raggy Beard & Ariel  
 1-3pm

**Tuesday 11<sup>th</sup>**  
 Surf simulator  
 10am-4pm

**Wednesday 12<sup>th</sup> Stay & Play**

**Thursday 13<sup>th</sup> Stay & Play**

**Friday 14<sup>th</sup>**  
 Bouncy Castle  
 10am-4pm

**Saturday 15<sup>th</sup> Stay & Play**

**Sunday 16<sup>th</sup> Stay & Play**







No Booking Required

Pathways4All  
**AROUND THE WORLD WEEK**  
 Tim Lamb's Children's Centre  
 AUGUST

**Monday 17<sup>th</sup>**  
 Samba Drumming workshop  
 1pm-3pm

**Tuesday 18<sup>th</sup> Stay & Play**

**Wednesday 19<sup>th</sup> Stay & Play**

**Thursday 20<sup>th</sup>**  
 Pizza making  
 1pm-3pm

**Friday 21<sup>st</sup>**  
 Bouncy Castle  
 10am-4pm

**Saturday 22<sup>nd</sup> Stay & Play**

**Sunday 23<sup>rd</sup> Stay & Play**






No Booking Required

Pathways4All  
**END OF SUMMER**  
 Tim Lamb's Children's Centre  
 AUGUST

**Monday 24<sup>th</sup>**  
 Summer Day of crafting & water fight  
 1pm-3pm

**Tuesday 25<sup>th</sup> Stay & Play**

**Wednesday 26<sup>th</sup> Stay & Play**

**Thursday 27<sup>th</sup>**  
 Sports Day & Summer Games  
 1pm-3pm

**Friday 28<sup>th</sup>**  
 Foam Party  
 1pm-3pm

**Saturday 29<sup>th</sup> Stay & Play**

**Sunday 30<sup>th</sup> Stay & Play**






No Booking Required



**SEND FAMILY FUN IN THE 🌞🌧️**

Family Gateway at Howdon Community Hub are running Inclusive Family sessions every Tuesday evening.

The perfect opportunity for your whole family to get involved, get active and most importantly have fun together in a friendly, safe environment.

So if you're looking for something to do this evening in this glorious weather, get yourself along; it's FREE! 🙌



🌟 SEND Sports Stars 🌟

Starting 16th June!

A fun, friendly and inclusive sports session for children with SEND and their families.

We know that trying new activities can sometimes feel challenging, so we've created a safe, supportive space where everyone is welcome. Families take part together, activities are adapted to meet different needs, and the focus is always on having fun, building confidence and making new friends.

📅 Every Tuesday

🕒 4:00pm – 5:00pm

📍 Howdon Community Hub

🆓 FREE

💙 All abilities. All families. All welcome.

To find out more or register your interest, email [laura.mosavi@familygateway.co.uk](mailto:laura.mosavi@familygateway.co.uk)



## SEND FRIENDLY SUMMER 🗣️

Sharing this NEW HAF opportunity which focuses on healthy transitions into different education levels for young people with SEND.

The sessions will include developing skills such as teamwork and communication, as well as safe travel and healthy living.

Music and enterprise sessions can also be offered depending on the young people's interests; additionally, all attendees will receive lunch.

Participants must be aged between 13 and 18, and a high percentage should be eligible for Free School Meals.

They can cater for a wide range of SEND, but don't provide personal or 1:1 care.

[Young people can sign up via the form here:](#)

Alternatively, sign up by scanning the QR code on the poster attached.





We are looking forward to seeing our students enjoy the fruits of our fund-raising over the next few weeks. Both the MOVE events and This is Me Festival enable all students to enjoy weather appropriate events in the lead up to the end of term. We love supporting these events; they enhance the learning experience for students and classes.

If you can, please join us in person or online at our next meeting on Wednesday 8<sup>th</sup> July 9.45-10.45 as we plan ahead for next year. We would love your input.

**GNR 2026.** Many of you will know that for the last few years my husband Richard and daughter Aisling have taken on the GNR raising funds for FoPHS. This year they have signed up again and will be joined by Aisling's fiancé. As they say themselves it is our way of acknowledging the difference Percy Hedley made to our family as Niall, now 28 spent 14 years here and 2 at college.

For anyone taking on the run, Niall and I will, I expect be volunteering with the fund-raising team at the charity village in South Shields on the day.

We need your help to raise as much as we can. Please look at their page and if you in a position to help, please consider a small donation to their sponsorship target of £750. Last year we raised £863.

[Donate here](#)





### Facebook page:

This is a closed group for family and friends of Percy Hedley School, where you can share news and updates about school life. It is not for external professionals who may be working with families. To join, you need to answer the question stating your link with school.

Please note: this group is for sharing news and updates about school life and is not intended to discuss any issues around individual students, and as such all comments are moderated. If you have a particular issue or concern, please contact school directly on 0191 216 1811.

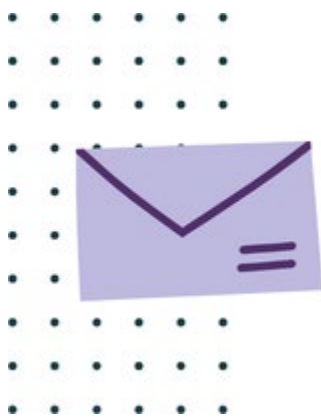
[Join here](#)



## Quote of the Week

“Wherever you go, no matter what the weather, always bring your own sunshine”.

Anthony J. D’Angelo



## Contact details

Eileen Robinson: Family Liaison Officer  
Email: [e.robinson@percyhedley.org.uk](mailto:e.robinson@percyhedley.org.uk)  
Telephone: 0191 2161811 ext. 3260.